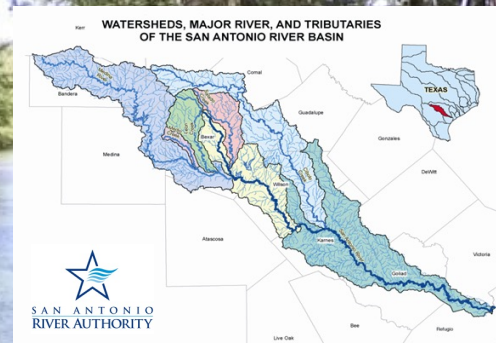


# Protecting the Medina River Watershed

The Medina River is an important geomorphic feature in the San Antonio area. The watershed of the river encompasses all parts of the Edwards Aquifer. Locally our community makes use of the river for municipal, agricultural, and recreational reasons. It is important to keep the river and its watershed clean, safe, and enjoyable.

Rivers have an important role in the environment. They are conduits for water and sediment coming from the landscape and moving toward the ocean. This flowing water causes sediment erosion as a natural process, but human activities can increase the amount of erosion that occurs. The San Antonio River Authority monitors erosion and take steps to reduce accelerated erosion in the Medina River watershed.



Get involved to help protect the river!



The San Antonio River Authority strives to maintain the quality of the Medina River by improving management practices of the river and ensuring favorable water quality levels. Actions to protect the Medina include implementing low-tech restoration concepts, like the Beaver Dam Analog project. By addressing the main causes of erosion, the project aims to naturally reduce soil erosion and increase flood resiliency.